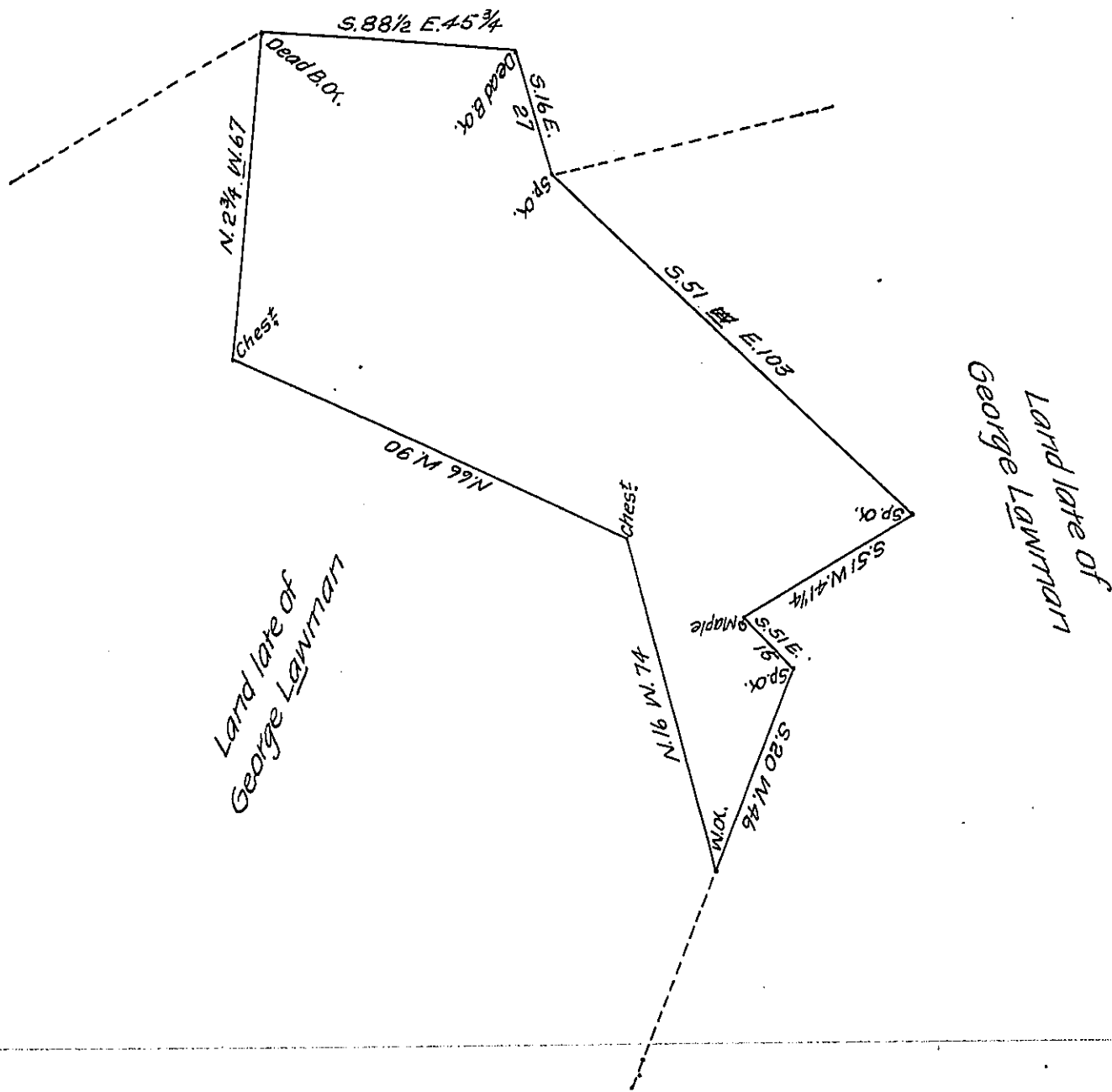


FORM NO 1.

Joseph Kaughertawer



A Draught of a Tract of Land situate in Martick Township Lancaster County containing Fifty-one acres and eighty perches and Allowance Surveyed the 10th Day of December A.D., 1801 for George L^{AWMAN} &c. It being part of a Larger Tract of 262 ⁹⁵/₈ & 88 ⁷/₈ & Allowance Formerly Surveyed unto the said George L^{AWMAN} By Virtue of a Warrant dated the 30th Day of May A.D. 1734 &c.

H. Ream, D.S.

To Samuel Cochran, Esq^r

Surveyor General.

IN TESTIMONY that the above is a copy of the original remaining on file in the Department of Internal Affairs of Pennsylvania, made conformably to an Act of Assembly approved the 16th day of February, 1833, I have hereunto set my Hand and caused the Seal of said Department to be affixed at Harrisburg, this twelfth day of November 1907.

Henry Gould
 Secretary of Internal Affairs.